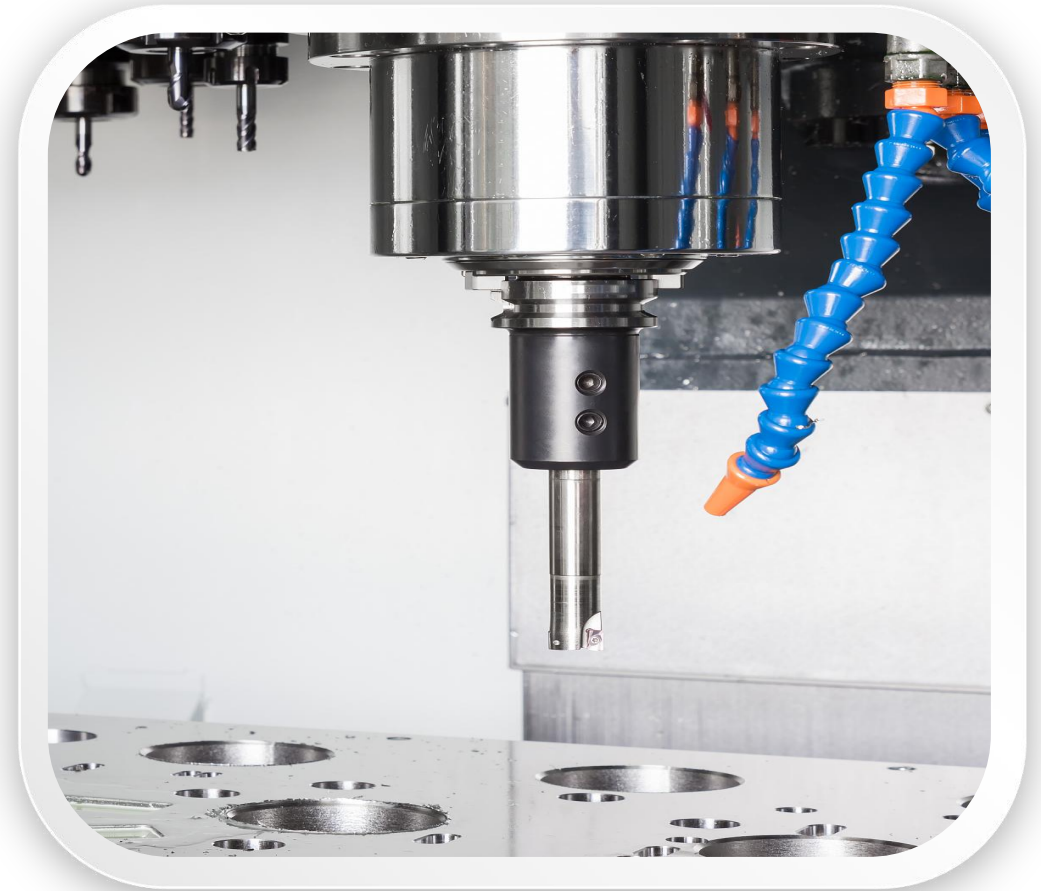


Equipment Overview

- + die casting
- + Stamping/Turning
- + Polishing/Grinding/Sandblasting
- + PVD
- + CNC
- + MIN
- + plating



Die casting equipment

Overview of the die-casting factory area



Magnesium, aluminum, and zinc alloy die casting (with vacuum equipment)

CNC machining center

A general view of the CNC machining center factory area.



Stamping and turning

Overview of the stamping and machining plant area



MIM workshop

Overview of the MIM workshop and factory area
(featuring the first continuous push-plate oxalic acid degreasing and sintering furnace in China)



Degreasing furnace + vacuum sintering integrated system: Daily production capacity of **50,000** units, monthly production capacity of over **1,400,000 PCS**.

The continuous furnace is **28 meters** long and **5 meters** wide. It is the first of its kind in the domestic MIM industry. It features fully automated operation, **runs 24/7** without interruption, resulting in improved efficiency and stable product structure.

Polishing, grinding, and sandblasting

An overview of the polishing, grinding, and sandblasting plant area.



Surface
grinding



Manual
polishing



Sandblasting
machine

PVD workshop

An overview of the PVD manufacturing facility.

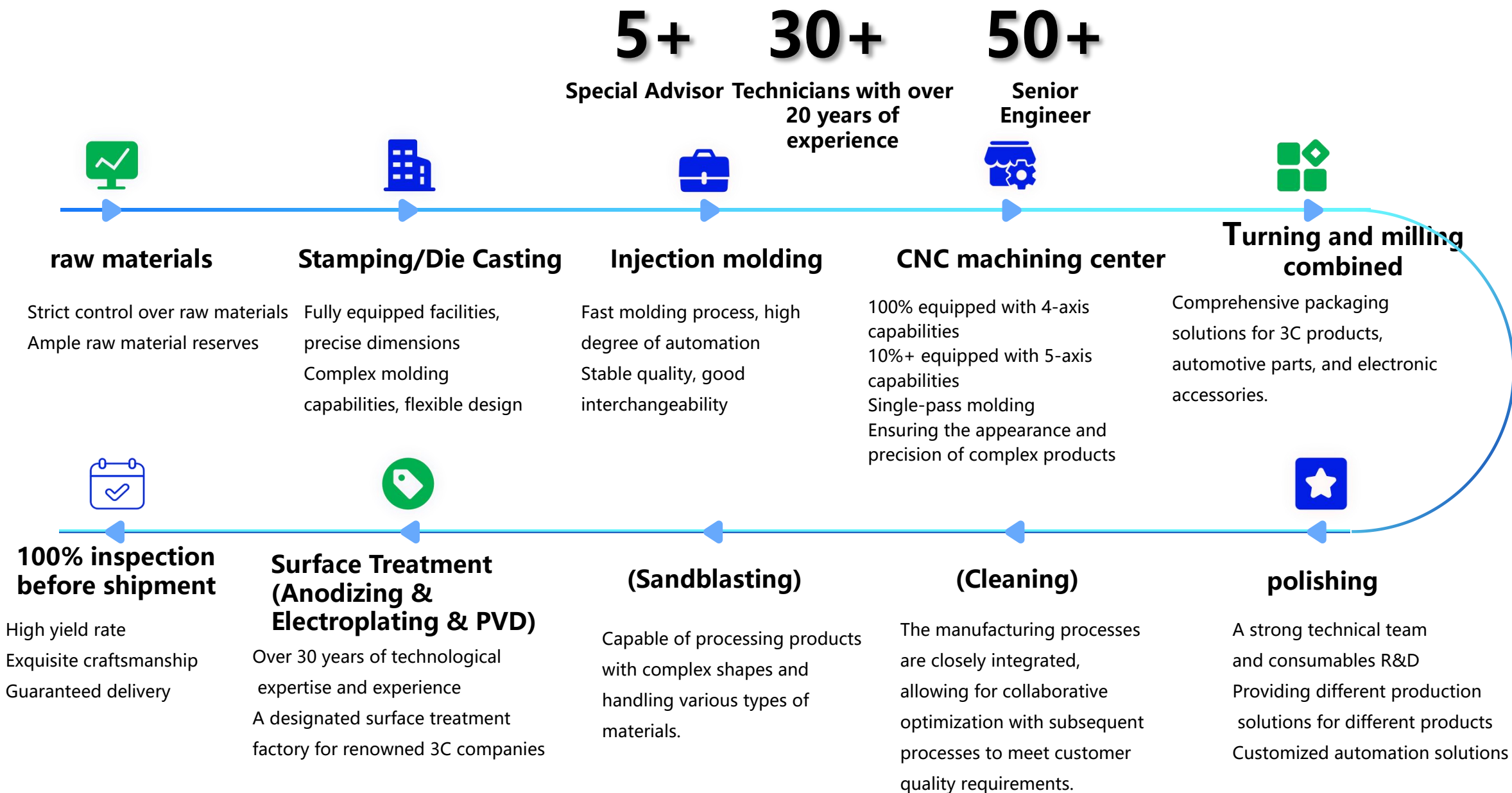


Manufacturing Process Core Products

- ⊕ Production process
- ⊕ Product display



Strong manufacturing capabilities



Precision metal and plastic surface treatment services



**Metallic appearance
PVD (Physical Vapor
Deposition)**



**Metallic appearance
PVD (Physical Vapor
Deposition)**



**Metallic appearance
PVD (Physical Vapor
Deposition)**



**Metallic appearance
PVD (Physical Vapor
Deposition)**



**Metallic appearance
PVD (Physical Vapor
Deposition)**



**Metallic appearance
PVD (Physical Vapor
Deposition)**



**Metallic appearance
PVD (Physical Vapor
Deposition)**



**Metallic appearance
PVD (Physical Vapor
Deposition)**

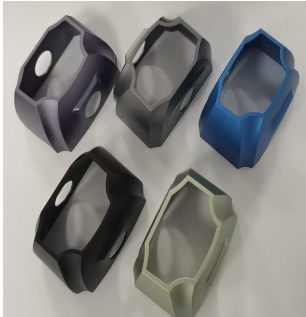
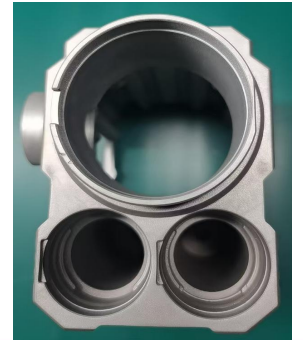
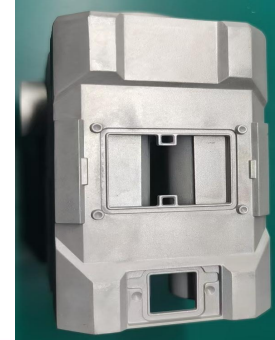


**Metallic appearance
PVD (Physical Vapor
Deposition)**

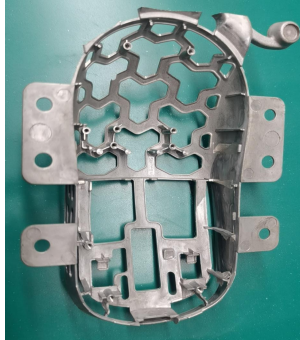
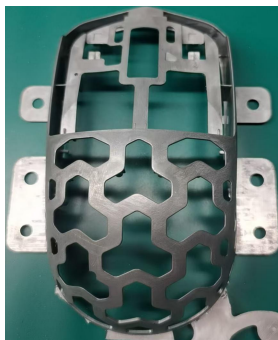
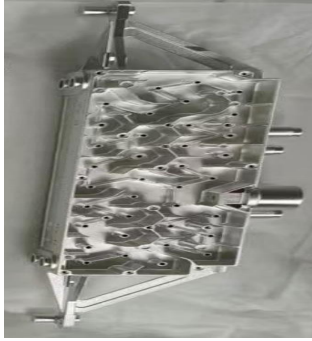
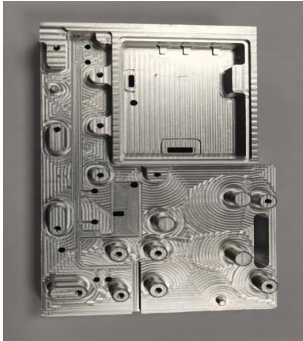


**Metallic appearance
PVD (Physical Vapor
Deposition)**

Precision metal processing business - Die casting

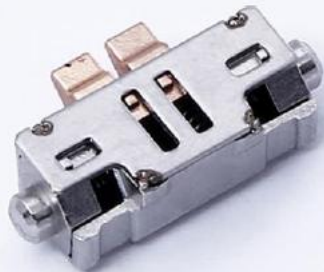


Precision metal processing business - Die casting



Precision metal processing business - MIM (Metal Injection Molding)

Audio and headphone
sliding arms, cover plates,
and speaker coil motors.



Computers
Computer hinges, cooling fans



Mobile phones
SIM card tray, decorative ring



Precision metal processing business - CNC

Electronic product casings



Quality guaranteed

- + Measuring equipment
- + Quality Management
- + Outsourced quality control
- + Internal Quality Management Process



Measuring equipment

Reese 3D

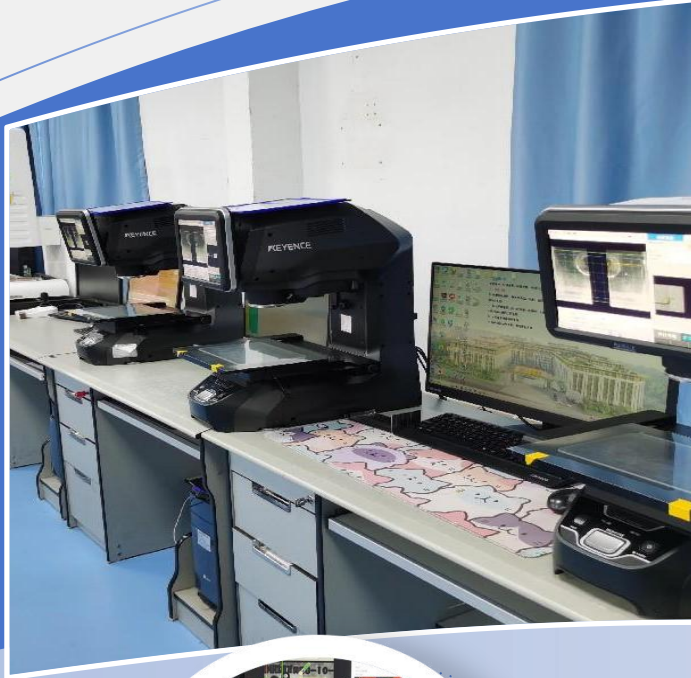


Image size
detection



Testing environment



Constant temperature and humidity test chamber



Metallographic sample cutting machine

2.5D Imaging System

3D Imaging System

Salt Spray Tester

Abrasion Tester

Linear Abrasion Tester

HV Hardness Tester

Ball Mill Thickness Gauge

Testing environment

Laboratory equipment



2.5D Imaging System

2D optical imaging measuring instrument, which ensures accurate measurement data.



3D Imaging System

Compared to 2D measuring instruments, it can perform 3D optical measurements, ensuring accurate measurement data.



Salt Spray Tester

Measuring height data in millimeters.



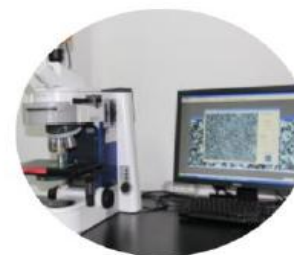
Abrasion Tester

Accurately measure the unit weight and density of the product to ensure product quality.



Linear Abrasion Tester

Micron-level dimensional measurement, ensuring precise control of dimensional tolerances.



HV Hardness Tester

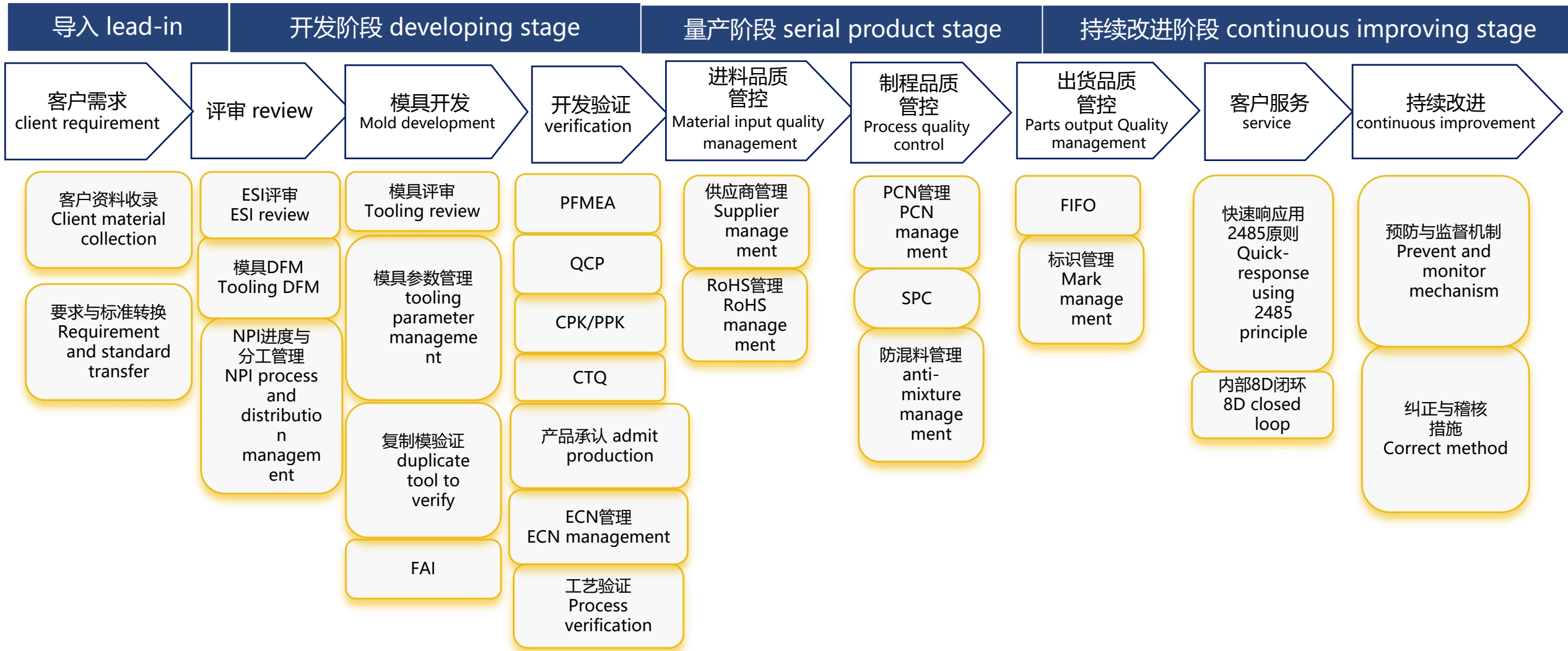
Analyzing the product's structure, composition, morphology, crystal grains, and other product characteristics.



Ball Mill Thickness Gauge

Inspect the product's appearance quality and test its resistance to abrasion.

Management --- Control System



Internal quality management process (strict entry and exit controls)

阶段	认识品质	找标准（内外部量试）	锁定品质	培训/接收/审核	爬坡品质	制造品质	过程品质	
	接收学习客户标准	人/物/机/法/环/测的因素	人/物/机/法/环/测	培训	线体承认达标	标准执行与监管	预防批量不良发生	
作业内容	客户图纸	CPK1（尺寸/外观）	建立资料档案	理论制程能力分析	线体承认达标	首件	数据及时性 及真实性	IQC
	客户MSOP	CPK2（尺寸/外观）	文件受控	CPK1/2/3	理论制程能力分析 （大货管控）	巡检		FQC
	外观通用标准	CPK3（尺寸/外观）	文件存档	人物机法环测对应受控文件的培训	制程品质数据 （加强版）	看板		全检
	客户进料SIP	理论制程能力分析	文件下发	GRR		定投		OQC
	客户外观/结构细节说明		责任对应单位审核	ARR		全检		客诉
	性能测试标准		品质体系监控			IQC/FQC/OQC/客诉	理论制程能力分析	
	理论制程能力分析		SQE			日品质会议及异常深挖结案处理	异常处理跟踪快速结案	

Supplier and Subcontractor Quality Control

Standardization is moving forward.

Extending the specifications for product design, manufacturing processes, and packaging, FMEA analysis is conducted during the development phase to identify Critical-to-Quality (CTQ) characteristics, which are then incorporated into the supplier quality control plan, specifying test items and test methods.

Shifting delivery and internal control management forward.

Improve the supplier delivery management process and increase delivery accuracy; and ensure the effective transmission of correct information and proper coordination of delivery management.

Shifting IQC (Incoming Quality Control) inspection capabilities upstream.

Establish a continuous management system for testing capabilities, encompassing employee onboarding training, skills assessment, theoretical and practical examinations, and continuous improvement of supplier quality testing capabilities.



Shift management methods upstream.

Hold a supplier onboarding kickoff meeting, identify any missing organizational structures or roles within the supplier's organization and fill those gaps, and standardize the creation of supplier SOPs/SIPs.

Equipment relocation

Establish a baseline for testing equipment (including tooling), plan according to the supplier's QCP control items identified through CTQ analysis, and establish rules for testing equipment acceptance, daily use, and maintenance management.

Standardized and efficient project management capabilities

